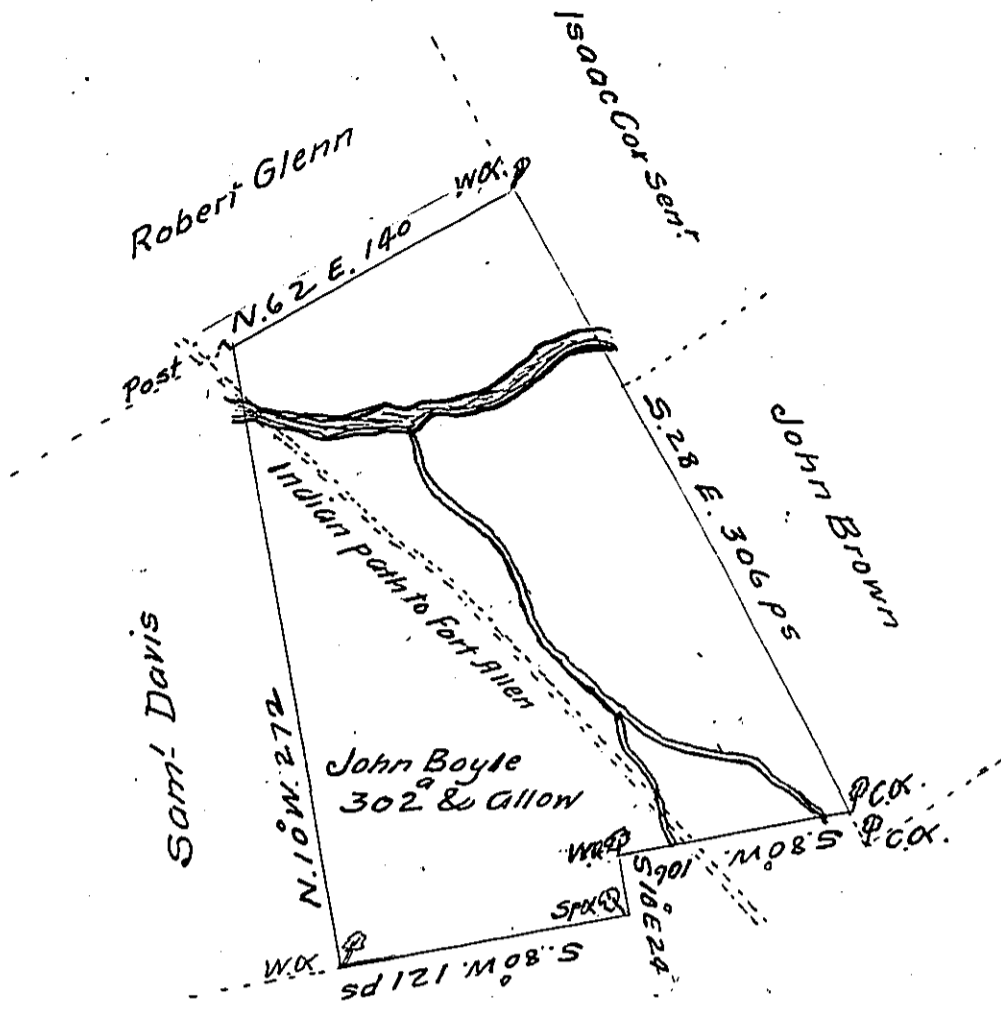


Sug. Loaf -
Luzerne.



A Draught of a tract of Land called Ballymoney situate on Nesco
 peck Creek where the path to Fort Allen crosses the said Creek
 adjoining land surveyed for Saml Davis & others in the County
 of Northumberland containing Three hundred and two acres
 of land besides the usual allowance of 6 p.c. for Roads & c^a
 Surveyed the 8th day of November 1773 for John Boyle in pur-
 suance of a warrant dated the 6th day of August 1773
 To John Lukens Esq^r by Chas Stewart Dep Sur^t
 Survey^r Genl.

IN TESTIMONY that the above is a copy of the original remaining on file in
 the Department of Internal Affairs of Pennsylvania, made
 conformably to an Act of Assembly approved the 16th day of
 February, 1833, I have hereunto set my Hand and caused
 the Seal of said Department to be affixed at Harrisburg,
 this Twenty ninth day of August 1911

Henry Howell
 Secretary of Internal Affairs.